

**LA**  
**CASTELLAMONTE**

*Stufe da sempre. Per sempre.  
Stoves since 1975.*



**INSTRUCTION MANUAL**

**Focus**



*Thank you very much for  
buying FOCULUS!*

*This manual contains  
assembly and setup  
instructions as well as  
additional info on how to  
properly operate  
your FOCULUS.*

# GENERAL INFORMATION AND WARNINGS

FOCULUS IS MADE OF SEPARATE PARTS:

1. Base;
2. Bowl;
3. Cone Plate;
4. Grill;
5. Top Cover.

As these single parts are rather heavy and the ceramic bowl must be handled with care, we recommend that at least **2 persons** are used to move and install the unit.

FOCULUS is made for **outdoor use only** and must not be used inside a building, garage or any indoor area.

Use caution when you are around FOCULUS, cause there is an **open flame** and **hot cooking** and **grilling surfaces**.

Do not overload the FOCULUS brazier with logs. For wood charging procedure, please see usage instructions below.

During use, all parts of the FOCULUS become **hot**, to avoid burns do not touch any part of the FOCULUS until it has cooled down completely.

**Do not use FOCULUS for indoor heating or cooking.**

Do not use gasoline, lighter fluid or any other combustible liquid to start the fire. Please always refer to the usage instructions below.

Keep electrical devices and cables far from the FOCULUS when it is in use.

Do not leave the FOCULUS unattended, especially when children and pets are around.

**FOCULUS must not be used by children.**

We recommend usage by adults. If, by drinking or assuming medication, your ability to safely use FOCULUS is impaired, do not use the FOCULUS.

Do not use the FOCULUS under any overhang or nearby combustible unprotected structure as sparks and embers could fly out with wind. Do not use FOCULUS near trees or shrubs.

**FOCULUS must not be used on boats or recreational vehicles**, near gasoline tanks or liquid propane tanks. **Keep FOCULUS away from all combustible materials and flammable liquids.**

**Always use FOCULUS in accordance to your local and national rules. Contact your local fire department for rules on outdoor wood fires.**

We recommend dry, seasoned hardwood. It will burn better and it will produce less smoke.

Do not burn charcoal briquets, lump charcoal, manufactured logs, driftwood trash, leaves, paper, cardboard, plywood, painted or stained or pressure treated wood. Do not use pine and cedar wood as they tend to throw out sparks.

**Do not alter FOCULUS structure or set up in any way.**

Do not use FOCULUS near vehicles. FOCULUS must be placed on an even, hard, non combustible surface.

Do not use FOCULUS on wooden floors without adequate floor protection.

Remove ashes after each use and only when they are completely cool.

**Do not use FOCULUS on windy weather condition.**

Do not wear loose clothes while using FOCULUS. Keep your clothes far from fire.

**SERIOUS INJURY, DEATH OR PROPERTY DAMAGE MAY OCCUR IF THE ABOVE LISTED RULES ARE NOT EXACTLY FOLLOWED.**

## **EXCLUSION OF LIABILITY**

Correct and safe use of this product is the responsibility of the buyer and user. The buyer accepts that neither the manufacturer LA CASTELLAMONTE DI R. PERINO SAS nor its distributors (including contractors or those working on a temporary or occasional basis) can be held liable for any personal injury or damage caused by the operation of this product.

The buyer accepts responsibility for safeguarding others, including third parties, children and pets, against injury caused by touching a hot FOCULUS, and accepts the risk entailed by leaving a hot FOCULUS unattended.

**This manual must be stored safely and must be read by every user, before use.**

## ASSEMBLY AND SETUP

Unscrew the 3 screws inside the steel cone and remove the whole steel cone from the wood/corten base.

Carefully, at least 2 strong persons are required to do this operation.



Carefully place the ceramic bowl in its correct position. At least 2 strong persons are required to do this operation.



Place the steel cone inside the ceramic bowl and screw the three screws you removed before.

At least 2 strong persons are required to place the steel cone inside the ceramic bowl.



Put the steel plug to close the ash container and optionally put the grill over the circular cooking plate. The grill must be removed when you light the FOCULUS.



# USAGE

**FOCULUS is designed and conceived for outdoor use only.**

## TO LIGHT THE FOCULUS

Insert some small and dry wood in the hole of the steel cone. Light the wood with a natural lighter, do not use alcohol or other flammable fluids.

As the wood begins to burn, progressively add bigger dry logs to obtain a lively fire. Feed the brazier for at least 1 hour, without overcharging it. This will allow a good combustion and low smokiness.

Once the desired cooking temperature has been reached, do not over charge with wood but charge in order to maintain the desired temperature.

Check that the cooking plate temperature is reached by using a minimum quantity of food (meat, fish, vegetables) that you want to cook.

## DURING COOKING

Add small quantities of wood, to maintain the temperature of the cooking surface and avoid overheating and smokiness of the brazier.

## ONCE FINISHED COOKING

**Wait for all surfaces to cool.**

Then remove the cooking grate over the circular cooking plate, with the special thermal gloves supplied, and cover with the appropriate lid to help extinguish the embers, or if you do not have the lid, let the embers cool naturally.

The emptying of the brazier must be carried out only with the embers off and cold, according to the following methods:

1. Remove the lid from the cooking plate (if you have used it before, to cool the embers);
2. Remove the ash from the bottom of the brazier, in order to release the lid of the ash container;
3. Remove the lid of the ash container and discharge all the cooled embers into it. The ash container is underneath the brazier, in the base of the FOCULUS.

## **CLEAN AND STORE THE FOCULUS**

Once you have finished cooking, remove the remains of food from the cooking plate with a kitchen spatula, without scratching excessively.

When all the surfaces of the FOCULUS, including the ceramic bowl, have cooled down, take a damp cloth and a small amount (1/4 - a quarter - of a teaspoon) of dish detergent and pass on the cooking plate. Do not use abrasive sponges or abrasive cleaners.

Clean and rinse well with the damp cloth.

Dry with a soft, dry cloth.

Lightly oil the circular cooking plate with edible oil (seeds or olive).

Once the cooking plate has been dried and lightly oiled, it is possible to cover the foculus with its special bag.



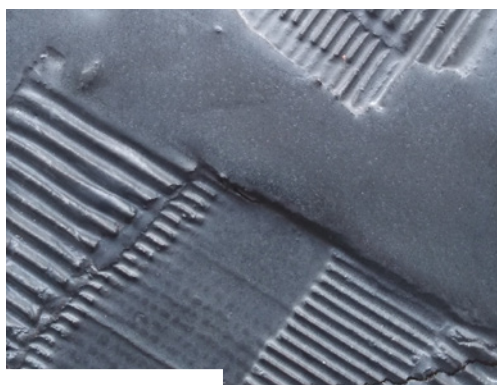
# COLOR CHOICES



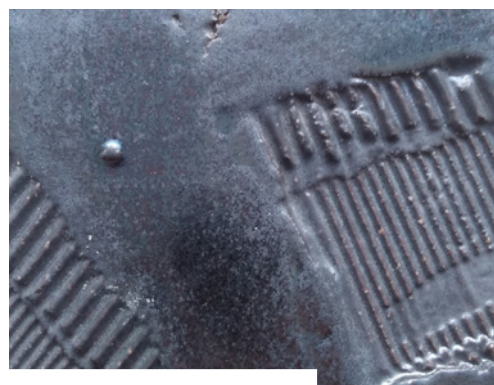
**SHINY COLORFUL TEXTURE**



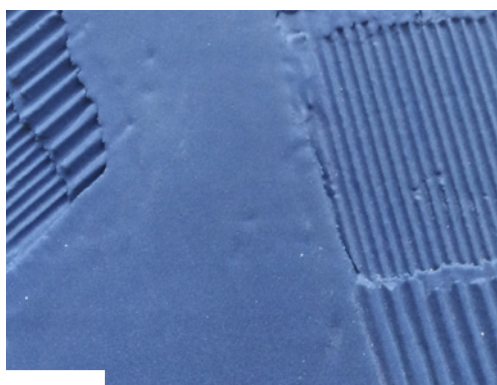
**MATT COLORFUL TEXTURE**



**MATT BLACK**



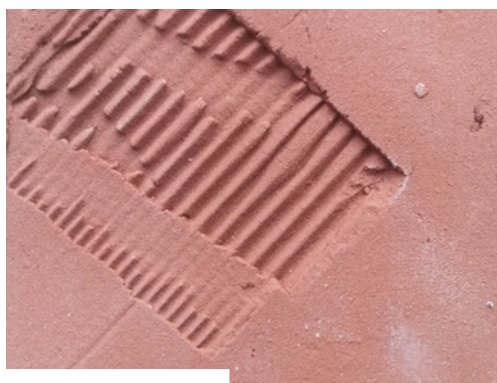
**METALLICO BLACK**



**BLUE**



**MATT OR SHINY RED**



**TERRACOTTA**



**LA CASTELLAMONTE di ROBERTO PERINO SAS**

Via Casari 13 - 10081

Castellamonte (TO) - ITALY

P. IVA 05362500018

**TEL**  
**TEL · FAX**  
**E-MAIL**

0039 0124 514149  
0039 0124 581690  
info@lacastellamonte.it

**WWW**  
**WWW**

**LACASTELLAMONTE.IT**  
**STACKSTOVES.COM**

S t u f a d i  
**Castellamonte**  
**ORIGINALE**  
ASSOCIAZIONE CERAMISTI CASTELLAMONTE



PERCHE' LA QUALITA' RICONOSCIUTA SIA RICONOSCIIBILE

